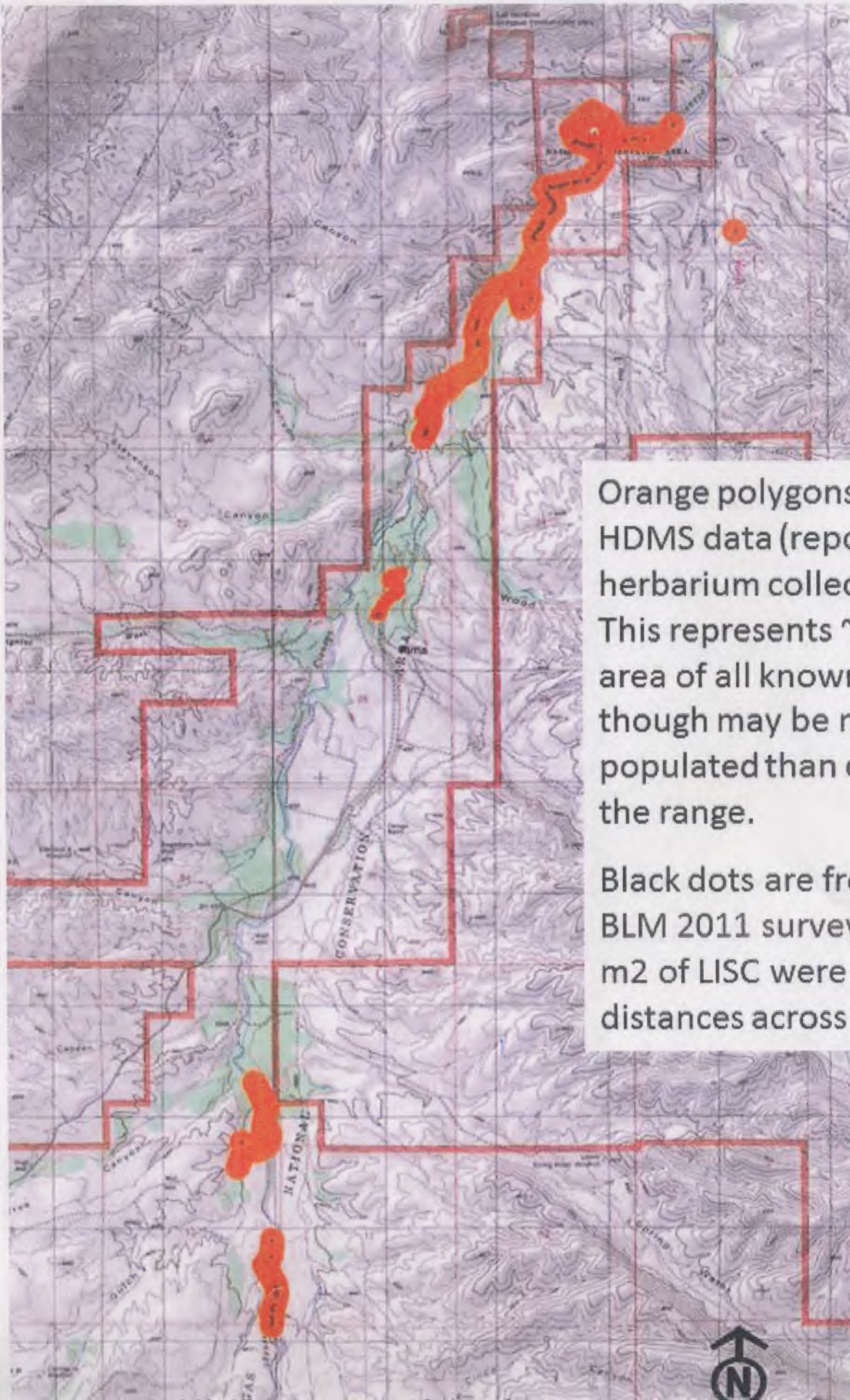


Close-up of upper Cienega Creek LISC occurrences

7/30/14

Umbel
Julie



Orange polygons come from HDMS data (reported locations, herbarium collections, etc). This represents ~12% of the area of all known occurrences; though may be more densely populated than elsewhere in the range.

Black dots are from Simms et al BLM 2011 survey when 1,455 m² of LISC were recorded (xy distances across patches).