

**ADDENDUM TO THE ROSEMONT MINE SAGUARO AND AGAVE SURVEY: PROPOSED
ROSEMONT PROJECT SANTA RITA ROAD ALIGNMENT REPORT:
APPROXIMATELY 6.7 ACRES ON CORTO ROAD BETWEEN
COUNTRY CLUB ROAD AND THE SANRITA PARCEL**

PREPARED FOR: Rosemont Copper Company

PREPARED BY: WestLand Resources, Inc.

DATE: October 7, 2011

PROJECT NO. 1049.29 315 315

TABLE OF CONTENTS

1. INTRODUCTION	2
2. METHODS	2
3. RESULTS	2

LIST OF TABLES

Table 1. Locations for Saguaros found within Rosemont's Proposed 6.7-Acre Santa Rita Road Utility Corridor Addendum Area	3
--	---

LIST OF FIGURES

(Figures follow text)

Figure 1. Vicinity Map

Figure 2. Saguaro Locations

Memorandum

To: Bev Everson
Cc: Chris Garrett
From: Kathy Arnold
Doc #: 005/12-15.3.2
Subject: Transmittal Associated with Utility Routes
Date: January 13, 2012

Rosemont Copper Company is having delivered by courier, the following materials in hard copy and electronic. These reports were prepared in support of the CEC application and/or associated with State Land Right of Way Process.

- *Addendum to the Rosemont Mine State-Protected Plant and Noxious Weed Inventory on ASLD Lands East of Sahuarita, Pima County, Arizona Report: Approximately 39.5 Acres Along Corto, Country Club, Santa Rita and Dawson Roads, Pima County, Arizona, dated October 7, 2011 by WestLand Resources, Inc. One (1) copy to FS and SWCA each.*
- *Addendum to the Rosemont Mine Saguaro and Agave Survey: Proposed Rosemont Project Santa Rita Road Alignment Report: Approximately 6.7 Acres on Corto Road Between Country Club Road and the Sanrita Parcel, dated October 7, 2011 by WestLand Resources, Inc. One (1) copy to FS and SWCA each.*
- *Addendum to the Pima Pineapple Cactus Survey: Proposed Rosemont Project Santa Rita Road Alignment Report: Approximately 46.2 Acres Along Corto, Country Club, Santa Rita, and Dawson Roads, Pima County, Arizona, dated October 7, 2011 by WestLand Resources, Inc. One (1) copy to FS and SWCA each.*
- *Addendum to the Pima Pineapple Cactus Survey: Proposed Rosemont Project Santa Rita Road Alignment Report: Approximately 38 Around a Utility Line Pinch Point Near the Helvetia Townsite, Pima County, Arizona, dated October 31, 2011 by WestLand Resources, Inc. One (1) copy to FS and SWCA each.*
- *Agave and Saguaro Surveys: Proposed Southern Alternative Utility Alignment for the Rosemont Project, dated October 31, 2011 by WestLand Resources, Inc. One (1) copy to FS and SWCA each.*

Please do not hesitate to contact me should you require anything further.

1. INTRODUCTION

This report is an addendum to the report “*Saguaro and Agave Survey: Proposed Rosemont Project Santa Rita Road Alignment*”, dated February 3, 2010, that WestLand Resources, Inc. (WestLand), produced for Rosemont Copper Company (Rosemont). The alignment for the Santa Rita Road electric transmission alternative was expanded to include 6.7 acres of State Trust lands administered by the Arizona State Land Department located north of Corto Road between Country Club Road and Rosemont’s Sanrita Parcel (Addendum Area; **Figure 1**). At the request of Rosemont, WestLand surveyed the Addendum Area for saguaros (*Carnegiea gigantea*) and agave (*Agave* spp.).

2. METHODS

A portion of the Addendum Area was surveyed for saguaros and agaves by a WestLand biologist on December 29, 2010, and a further expansion of the area was surveyed on September 28, 2011. Transects approximately 15 feet apart were walked to attain 100-percent coverage of the Addendum Area. Coordinates (UTM Zone 12 NAD83 US Feet) and heights of all saguaros were recorded on a GPS unit (no agaves were found).

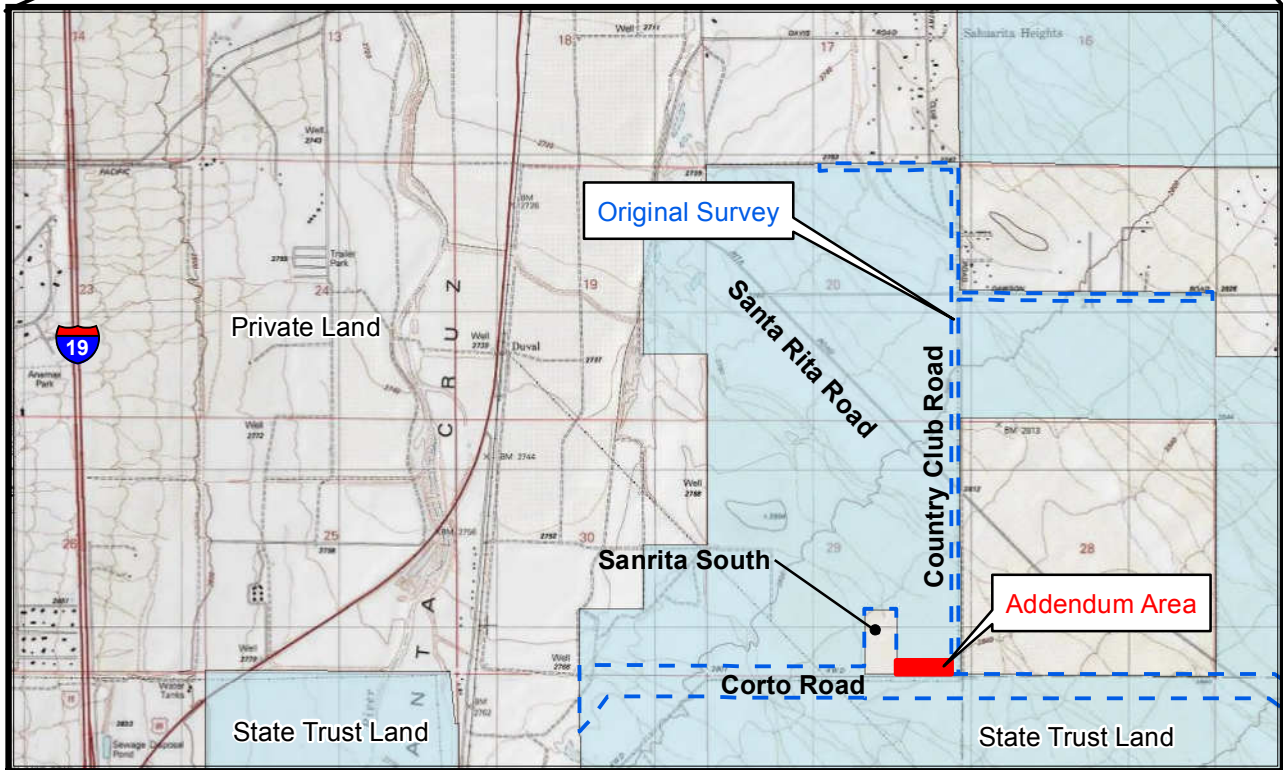
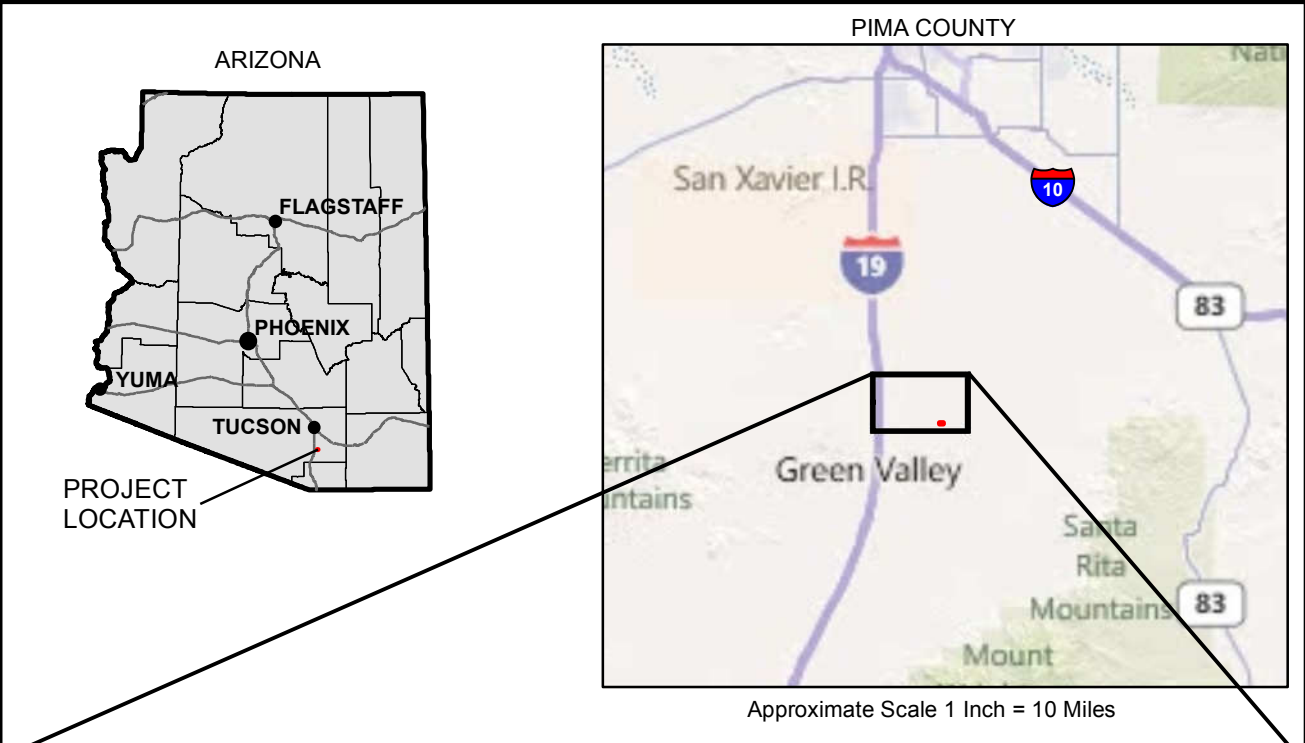
3. RESULTS

A total of 70 saguaros in 52 locations and no agaves were found and recorded during the survey. Multiple saguaros were recorded under single UTM coordinates when the saguaros were within a few feet of each other. Saguaro locations are depicted in **Figure 2**. Table 1 provides the UTM coordinates and heights for the saguaros found within the Addendum Area. The saguaros within the addendum area are almost all from a relatively recent cohort. Of the 70 saguaros, the tallest recorded was 20 feet, only three were more than 9 feet in height, and the mean height of all saguaros was 4.8 feet. Additional information, including a site description of the entire Santa Rita Road utility alignment and saguaros and agave found during the survey of the alignment, is found in the report referenced in the introduction of this addendum.

Table 1. Locations for Saguaros found within Rosemont's Proposed
 6.7-Acre Santa Rita Road Utility Corridor Addendum Area.

Saguaro No.	UTM Coordinates (NAD 83 US Feet)		Height (ft)		Saguaro No.	UTM Coordinates (NAD 83 US Feet)		Height (ft)
	Easting	Northing				Easting	Northing	
1	1662824	11584464	6		36	1662178	11584270	2
2	1662822	11584441	5.5		37	1662178	11584270	5
3	1662764	11584521	6		38	1662178	11584270	5
4	1662764	11584521	5		39	1662193	11584294	5.5
5	1662764	11584521	5		40	1662193	11584294	5.5
6	1662764	11584521	5		41	1662193	11584333	3
7	1662679	11584283	3		42	1662229	11584314	3.5
8	1662607	11584371	5		43	1662229	11584314	2.5
9	1662553	11584458	5		44	1662229	11584314	2
10	1662553	11584524	6		45	1662204	11584480	6
11	1662444	11584266	4		46	1662145	11584302	5
12	1662444	11584266	3		47	1662118	11584268	2
13	1662444	11584266	2		48	1662112	11584322	2
14	1662444	11584266	20		49	1662112	11584322	5
15	1662468	11584523	9		50	1662158	11584497	6
16	1662443	11584529	0.5		51	1662085	11584397	9
17	1662382	11584273	5		52	1662085	11584397	6
18	1662382	11584273	3		53	1662113	11584379	2.5
19	1662403	11584512	15		54	1662085	11584337	2.5
20	1662352	11584501	2.5		55	1662026	11584425	5.5
21	1662361	11584483	4		56	1662014	11584411	3.5
22	1662314	11584368	5		57	1662039	11584460	1
23	1662314	11584368	5		58	1661965	11584333	6
24	1662320	11584328	8		59	1661980	11584521	3
25	1662320	11584279	5		60	1661873	11584367	3.5
26	1662275	11584277	6		61	1661879	11584337	4
27	1662277	11584337	3.5		62	1661879	11584337	9
28	1662279	11584369	4		63	1661830	11584431	2.5
29	1662290	11584388	2		64	1661803	11584476	6
30	1662296	11584493	5		65	1661789	11584464	3
31	1662263	11584543	5		66	1661763	11584427	14
32	1662263	11584543	3		67	1661675	11584335	3.5
33	1662268	11584491	6		68	1661776	11584540	2
34	1662239	11584309	4		69	1661733	11584466	4
35	1662239	11584309	3		70	1661791	11584274	1

FIGURES



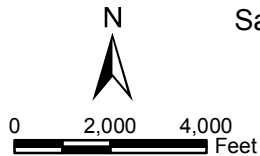
T17S, R14E, Portion of Section 29,
Pima County, Arizona,
Sahuarita USGS 7.5' Quadrangle

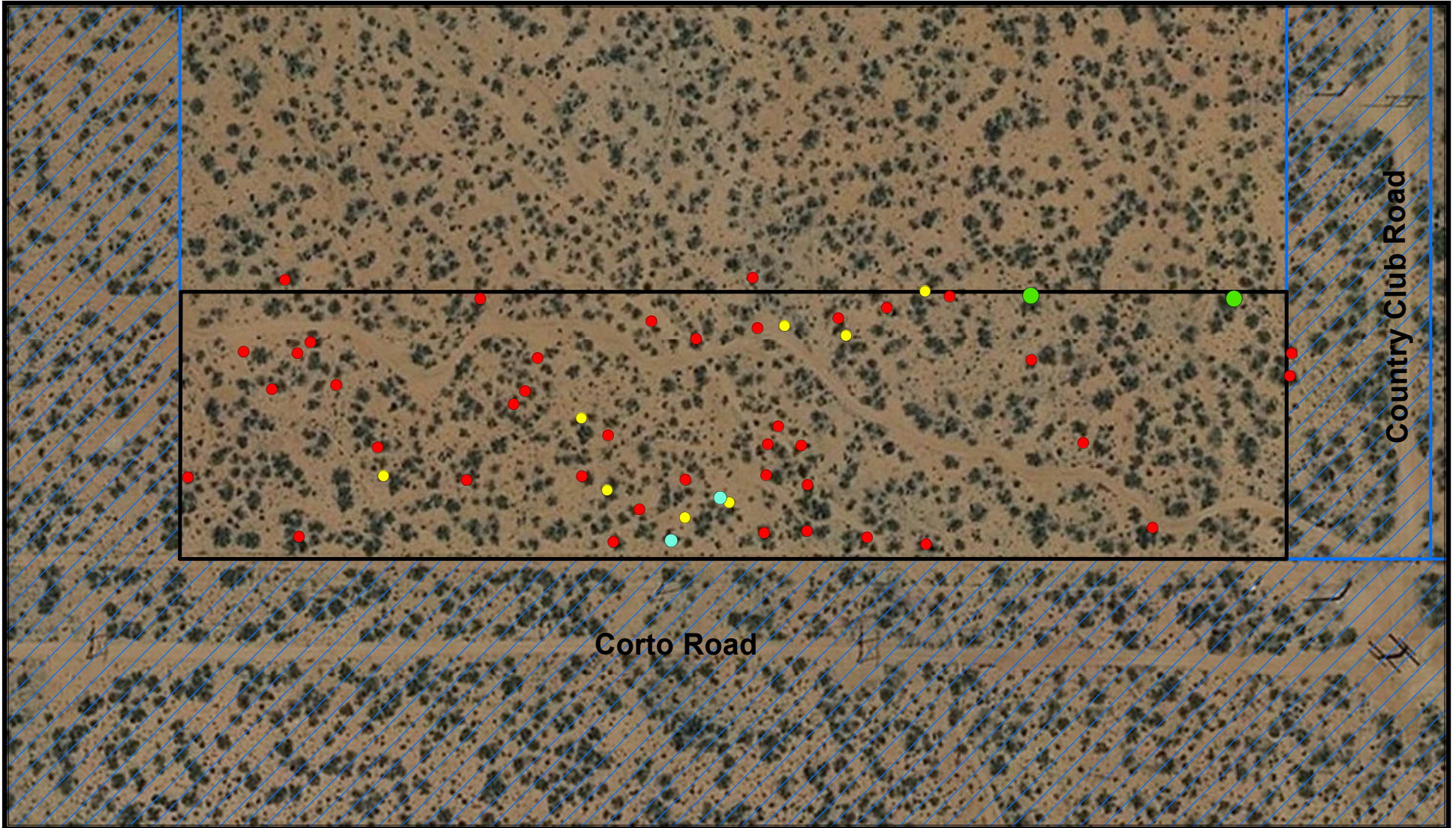
ROSEMONT PROJECT

Santa Rita Road Electric Transmission Line Addendum
Saguaro and Agave Inventory

VICINITY MAP

Figure 1



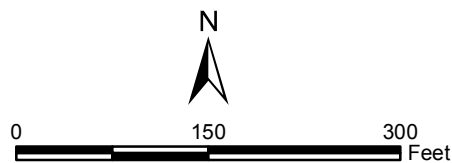


T17S, R14E, Portion of Section 29,
 Pima County, Arizona,
 2009 Aerials Express Imagery

- Addendum Area
- Original Survey (Saguaro Locations Not Depicted)

Saguaro Plant Location

- Single Plant
- 2 Plants
- 3 Plants
- 4 Plants



ROSEMONT PROJECT
 Santa Rita Road Electric Transmission Line Addendum
 Saguaro and Agave Inventory

Saguaro Location Map
 Figure 2