

**ADDENDUM TO THE ROSEMONT MINE SAGUARO AND AGAVE SURVEY: PROPOSED
SANTA RITA ROAD WATERLINE FOR THE ROSEMONT PROJECT REPORT:
APPROXIMATELY 38 ACRES AROUND A UTILITY LINE PINCH POINT NEAR THE
HELVETIA TOWNSITE, PIMA COUNTY, ARIZONA**

PREPARED FOR: Rosemont Copper Company

PREPARED BY: WestLand Resources, Inc.

DATE: October 31, 2011

PROJECT NO. 1049.32 315 315

TABLE OF CONTENTS

1. INTRODUCTION 2
2. METHODS 2
3. RESULTS 2

LIST OF TABLES

Table 1. Locations of Agaves Found within Rosemont’s Utility Corridor Pinch Point Addendum Area. 3

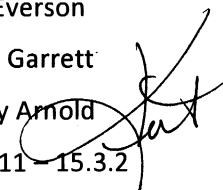
LIST OF FIGURES

(Figures follow text)

Figure 1. Vicinity Map

Figure 2. Aerial Overview with Agave Locations

Memorandum

To: Bev Everson
Cc: Chris Garrett
From: Kathy Arnold 
Doc #: 119/11-15.3.2
Subject: Transmittal of Analysis
Date: November 2, 2011

Rosemont Copper is transmitting the latest reports on biological resources.

- *Preliminary 2011 Rapid Survey Summary of the Rosemont Holdings and Vicinity*, WestLand Resources, dated October 27, 2011
- *Preliminary Summary of 2011 Rosemont Bat Roost Survey*, WestLand Resources dated October 28, 2011
- *Agave and Saguaro Surveys: Proposed Southern Alternative Utility Alignment for the Rosemont Project*, WestLand Resources, dated October 31, 2011
- *Addendum to the Rosemont Mine Saguaro and Agave Survey: Proposed Santa Rita Road Waterline for the Rosemont Project Report: Approximately 38 Acres Around a Utility Line Pinch Point Near the Helvetia Townsite, Pima County, Arizona*, WestLand Resources dated October 31, 2011
- *2010 Rapid Survey of the Rosemont Holdings and Vicinity*, WestLand Resources, dated October 26, 2011

Rosemont is providing CNF with three (3) hardcopies and one (1) disk copies of the above Technical Memoranda and reports and SWCA with two (2) hardcopies and one (1) disk copy.

1. INTRODUCTION

This report is an addendum to the report “*Saguaro and Agave Survey: Proposed Rosemont Project Santa Rita Road Alignment*,” dated February 3, 2010, that WestLand Resources, Inc. (WestLand) produced for Rosemont Copper Company (Rosemont). Approximately 38 acres of additional lands (Addendum Area) were subsequently added adjacent to the alignment, near a “pinch point” (a narrow connection of Rosemont Holdings between other privately owned lands) around the old Helvetia Townsite, in portions of Sections 22 and 23, Township 18 South, Range 15 East, Gila and Salt River Base Meridian (**Figure 1**). **Figure 2** depicts the location of the pinch point covered by this survey, as well as a pinch point location covered by the original survey. At the request of Rosemont, WestLand surveyed the Addendum Area for saguaros (*Carnegiea gigantea*) and agave (*Agave* spp.).

2. METHODS

From previous work in the area, no saguaros were expected to be found, and survey methods were tailored to agave survey, although any saguaros would likely have been found. The Addendum Area was surveyed by WestLand personnel on September 2, 2011. Transects were walked at variable transect widths, depending on ground cover, to provide visibility of agaves. UTM coordinates (UTM Zone 12 NAD83 US Feet) were recorded at the location of single agaves that were found, and a central UTM coordinate was recorded for multiple agaves found within a short distance of each other (5 meters or less, unless otherwise specified), and the number of agaves within that area was recorded.

Agaves were classified by estimating the diameter across the outer leaf tips of the plant. Three size classes were used: less than 4 inches in diameter (Class 1), 4 inches to 10 inches in diameter (Class 2), and greater than 10 inches in diameter (Class 3).

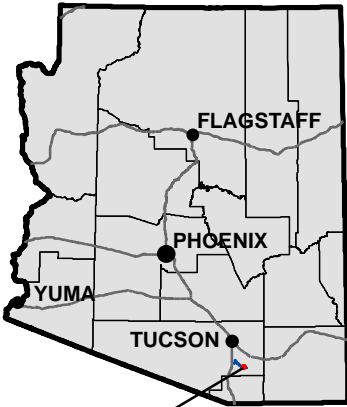
3. RESULTS

A total of 53 Palmer’s agaves (*Agave palmeri*) in 37 locations were recorded and no saguaros were found or recorded during the survey (**Figure 2**). Table 1 provides the UTM coordinates and size class for the agaves found within the Addendum Area. The agaves within the Addendum Area are almost all from the largest size class.

**Table 1. Locations of Agaves Found within Rosemont’s Utility Corridor Pinch Point
 Addendum Area.**

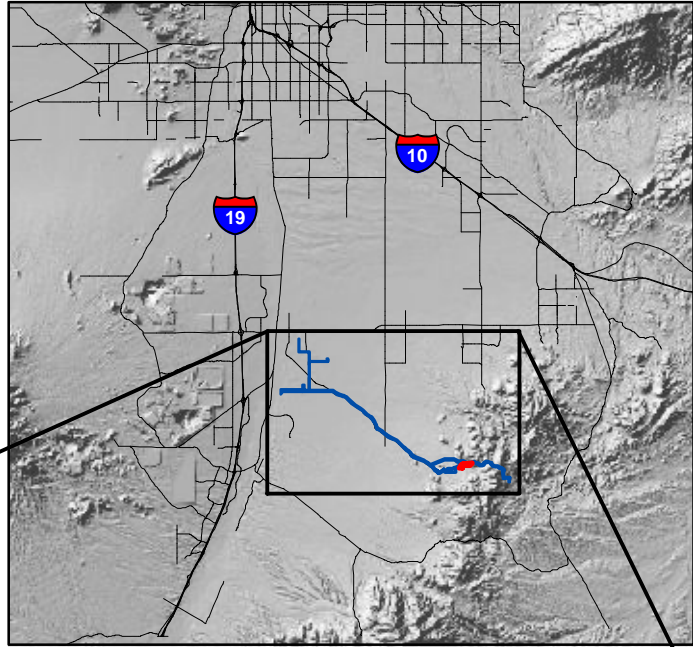
No. of Agaves	UTM Coordinates (NAD 83 US Feet)		Size Class	No. of Agaves	UTM Coordinates (NAD 83 US Feet)		Size Class
	Easting	Northing			Easting	Northing	
1	1707298	11563249	3	1	1705893	11563337	3
1	1707148	11563302	3	1	1705878	11563478	3
1	1707143	11563314	3	1	1705846	11563462	3
3	1706849	11563270	3, 2, 1	1	1705800	11563450	3
1	1706889	11563362	2	1	1705812	11563427	3
1	1706796	11563398	3	1	1705782	11563529	3
3	1706865	11563467	3 (all)	1	1705782	11563366	3
2	1706478	11563605	2, 3	1	1705763	11563347	3
1	1706231	11563488	3	1	1705649	11563415	3
1	1706222	11563437	3	1	1705670	11563446	3
1	1706252	11563370	3	2	1705608	11563393	1, 3
1	1706319	11563383	3	1	1705560	11563168	3
1	1706287	11563362	3	1	1705546	11563099	3
1	1706298	11563303	3	1	1705452	11563158	3
1	1706270	11563272	3	1	1705241	11563208	3
2	1706194	11563348	3 (all)	7	1705229	11563213	2 (1), 1 (6)
2	1706114	11563322	3 (all)	1	1705053	11563018	3
1	1705960	11563498	3	1	1705053	11563017	3
1	1705965	11563318	3				

ARIZONA

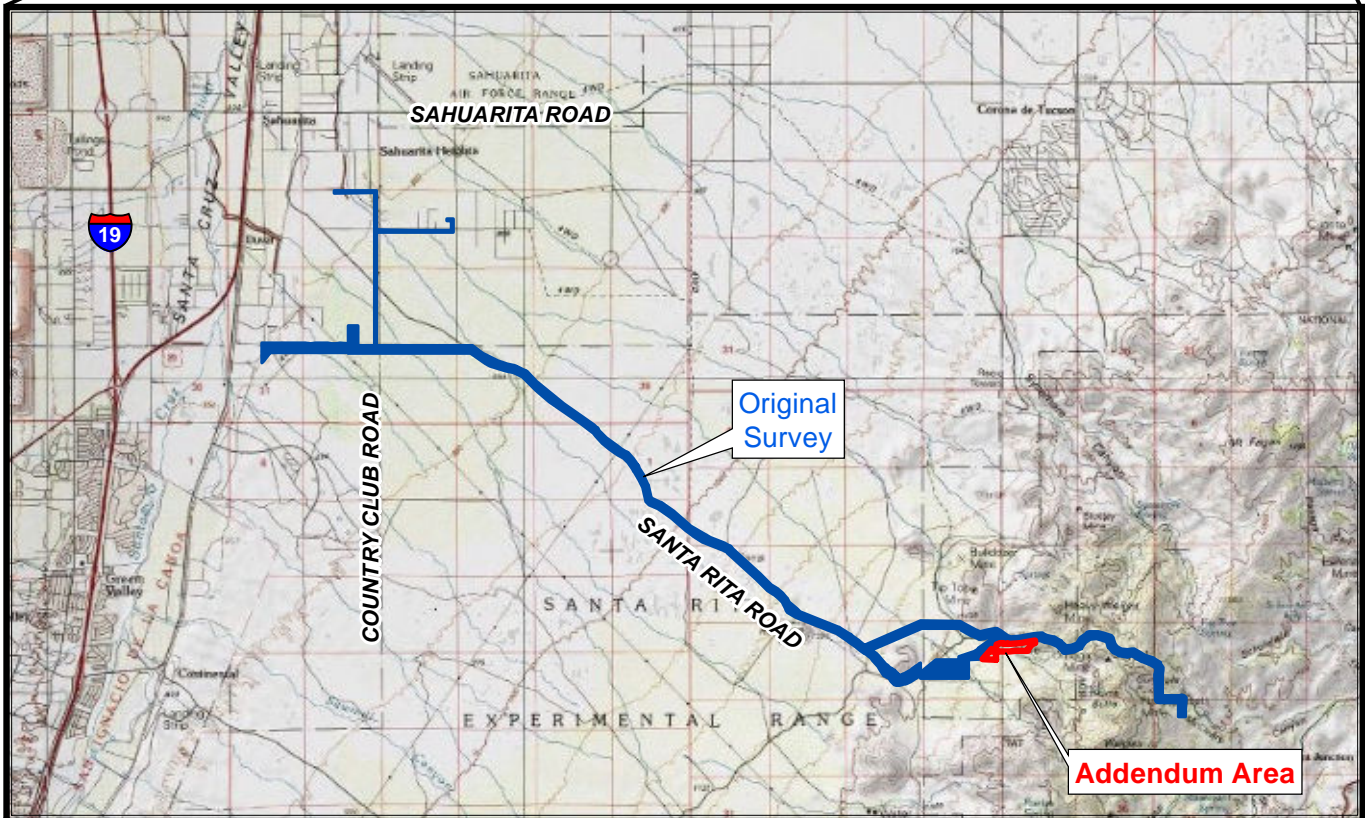


PROJECT LOCATION

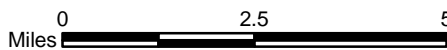
TUCSON METROPOLITAN AREA



Approximate Scale 1 Inch = 10 Miles

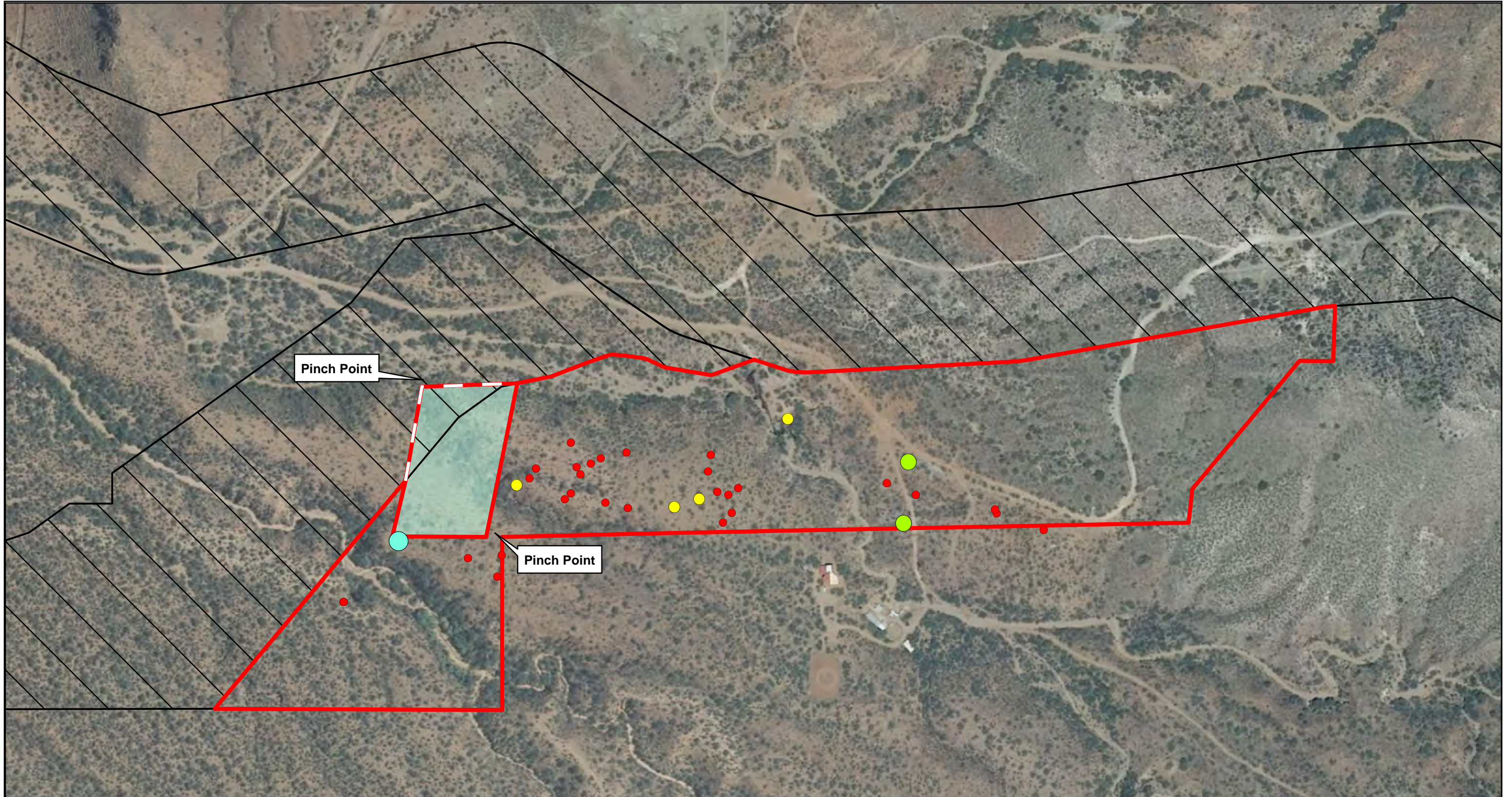


Survey Area Located:
T18S, R15E, Portion of Sections 22 & 23,
Pima County, Arizona
Helvetia USGS 7.5' Quadrangle



ROSEMONT PROJECT
Santa Rita Road Utility Line
Pinch Point Addendum
Agave & Saguaro Inventory

VICINITY MAP
Figure 1



T18S, R15E, Portion of Sections 22 & 23,
 Pima County, Arizona,
 Photo Source: National Agriculture Imagery Program, 2010

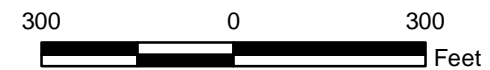


Legend

- Addendum Boundary
- Original Survey Area
- Out Parcel

No. of Agave

- 1
- 2
- 3
- 7



ROSEMONT PROJECT

Santa Rita Road Utility Line
 Pinch Point Addendum
 Agave & Saguaro Inventory

AGAVE LOCATIONS
 Figure 2